

**SIMBOLOGÍA**

**PLANTA**

- LINEA CENTRAL
- - - ORILLA DE CARRETERA
- - - CERCO DE PÍAS
- - - CERCO DE MALLA
- MURO
- 45° CURVAS MAYORES
- CURVAS MENORES
- ALCANTARILLA
- CRUCE DE AGUA
- BN (BANCO DE NIVEL)
- PI (POSTE DE LUZ)
- TROMPO

**PERFIL**

- TERRENO NATURAL
- RASANTE
- SECCIÓN DE ALCANTARILLA
- PI

**CUADRO DE DRENAJE MENOR**

N° ALC	ESTACIÓN	DIÁMETRO Y TIPO	LONGITUD (m)			PENDIENTE (%)	ELEVACIÓN		SESGO	OBRAS DE ARTE		OBSERVACIONES
			IZQ.	DER.	TOTAL		IZQ.	DER.		IZQ.	DER.	
46	8+267.40	36" TCR	12.30	11.50	23.80	1.60	62.763	63.143	90°00'00"	CR	CR	
47	8+273.40	36" TCR	12.30	11.50	23.80	1.64	62.723	63.113	90°00'00"	CR	CR	
48	8+279.40	36" TCR	13.20	11.50	24.70	1.82	62.623	63.073	90°00'00"	CR	CR	
49	8+285.40	36" TCR	13.50	11.50	25.00	1.16	62.883	63.173	90°00'00"	CR	CR	
50	8+291.40	36" TCR	13.50	11.50	25.00	1.12	62.853	63.133	90°00'00"	CR	CR	
51	8+297.00	36" TCR	13.50	11.50	25.00	1.32	62.783	63.113	90°00'00"	CR	CR	
52	8+307.10	36" TCR	15.00	11.60	26.60	0.68	62.503	62.683	108°00'00"	CR	CR	
53	8+320.00	36" TCR	13.50	12.00	27.00	0.74	62.553	62.753	65°40'00"	CR	CR	
54	8+331.00	36" TCR	13.50	12.00	25.50	2.59	62.833	63.493	90°00'00"	CR	CR	
55	8+337.00	36" TCR	13.50	12.00	25.50	2.08	62.703	63.233	90°00'00"	CR	CR	
56	8+343.00	36" TCR	12.40	12.00	24.40	1.48	62.753	63.113	90°00'00"	CR	CR	
57	8+349.00	36" TCR	12.50	12.00	24.50	2.37	62.543	63.123	90°00'00"	CR	CR	
58	8+355.00	36" TCR	12.50	12.00	24.50	1.35	62.713	63.043	90°00'00"	CR	CR	
59	8+361.00	36" TCR	12.00	12.70	24.70	1.46	62.743	63.103	90°00'00"	CR	CR	
60	8+510.00	36" TCR	10.20	10.50	20.70	0.53	62.475	62.585	90°00'00"	CR	CR	

**DATOS GEOMÉTRICOS DEL DISEÑO HORIZONTAL**

PI	COORDENADAS PI	EST. PI	ΔC (°)	G	T1 (m)	T2 (m)	R (m)	Lc (m)	E (m)	e max. (%)	SA (m)	Vel. Max. (km/h)
47	X = 489201.3970 Y = 1476608.0513	8+076.08	75°10'00"DER	6°57'00"	63.449	63.449	82.44	108.154	21.590	3.00	0.00	60
48	X = 489201.3970 Y = 1476608.0513	8+326.68	18°42'10"DER	0°34'23"	50.000	50.000	303.623	99.110	4.089	3.00	0.00	60
49	X = 489201.3970 Y = 1476608.0513	8+613.88	44°50'00"IZQ	2°31'03"	93.883	93.883	227.59	178.087	18.604	3.00	0.00	60

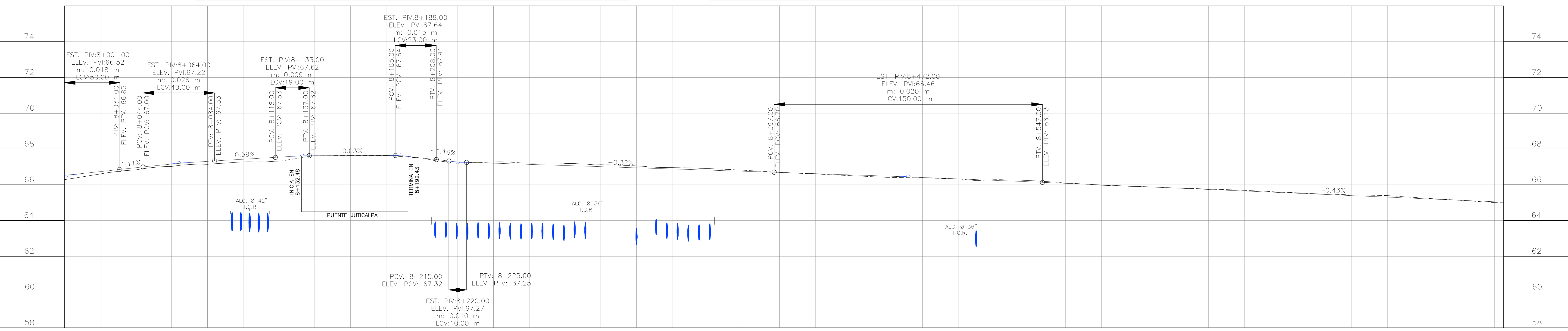
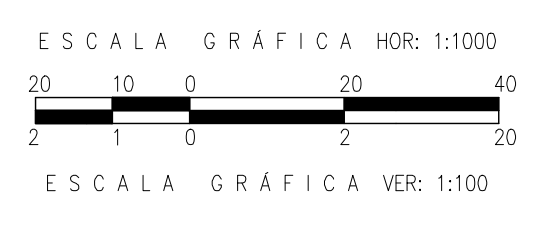
**TERRACERÍA**

CORTE = 497.58 m³  
 RELLENO = 15425.49 m³  
 DE 8+000 A 8+800

**CUADRO DE DRENAJE MENOR**

N° ALC	ESTACIÓN	DIÁMETRO Y TIPO	LONGITUD (m)			PENDIENTE (%)	ELEVACIÓN		SESGO	OBRAS DE ARTE		OBSERVACIONES
			IZQ.	DER.	TOTAL		IZQ.	DER.		IZQ.	DER.	
31	8+097.40	42" TCR	12.65	10.00	22.65	1.99	63.173	63.623	89°35'00"	SO	SO	
32	8+102.30	42" TCR	12.40	10.00	22.40	2.01	63.183	63.633	94°20'00"	SO	SO	
33	8+107.20	42" TCR	12.25	10.00	22.25	2.20	63.123	63.613	91°40'00"	SO	SO	
34	8+112.30	42" TCR	11.90	10.10	22.00	2.23	63.093	63.583	89°34'00"	SO	SO	
35	8+117.30	42" TCR	11.70	10.60	22.30	2.20	63.123	63.613	87°30'00"	SO	SO	
36	8+207.40	36" TCR	13.20	11.50	24.70	1.09	62.893	63.163	90°00'00"	CR	CR	
37	8+213.40	36" TCR	13.20	11.50	24.70	1.38	62.833	63.173	90°00'00"	CR	CR	
38	8+219.40	36" TCR	13.20	11.50	24.70	1.50	62.773	63.143	90°00'00"	CR	CR	
39	8+225.40	36" TCR	13.20	11.50	24.70	1.58	62.753	63.143	90°00'00"	CR	CR	
40	8+231.40	36" TCR	13.20	11.50	24.70	1.50	62.793	63.163	90°00'00"	CR	CR	
41	8+237.40	36" TCR	13.20	11.50	24.70	1.58	62.763	63.153	90°00'00"	CR	CR	
42	8+243.40	36" TCR	13.20	11.50	24.70	1.58	62.783	63.173	90°00'00"	CR	CR	
43	8+249.40	36" TCR	13.20	11.50	24.70	1.50	62.763	63.133	90°00'00"	CR	CR	
44	8+255.40	36" TCR	13.20	11.50	24.70	1.46	62.753	63.113	90°00'00"	CR	CR	
45	8+261.40	36" TCR	12.30	11.50	23.80	1.55	62.763	63.133	90°00'00"	CR	CR	

NOTAS:  
 CR=CABEZAL RECTO  
 SO=SIN OBRA  
 CA=CABEZAL CON ALAS  
 T=TRAGANTE



ESTACIÓN	PAVIMENTO EXISTENTE	SUBRASANTE
8+000	66.53	66.53
8+020	66.60	66.73
8+040	66.63	66.95
8+060	67.02	67.16
8+080	67.14	67.31
8+100	67.43	67.43
8+120	67.32	67.55
8+140	67.62	67.62
8+160	67.63	67.63
8+180	67.64	67.64
8+200	67.50	67.50
8+220	67.28	67.28
8+240	67.20	67.20
8+260	67.14	67.14
8+280	67.07	67.07
8+300	67.01	67.01
8+320	66.95	66.95
8+340	66.88	66.88
8+360	66.82	66.82
8+380	66.75	66.75
8+400	66.69	66.69
8+420	66.62	66.62
8+440	66.55	66.55
8+460	66.48	66.48
8+480	66.41	66.41
8+500	66.33	66.33
8+520	66.25	66.25
8+540	66.16	66.16
8+560	66.08	66.08
8+580	65.99	65.99
8+600	65.91	65.91
8+620	65.82	65.82
8+640	65.74	65.74
8+660	65.65	65.65
8+680	65.56	65.56
8+700	65.48	65.48
8+720	65.39	65.39
8+740	65.31	65.31
8+760	65.22	65.22
8+780	65.13	65.13
8+800	65.05	65.05